

Razorfish, Porthole & Logger



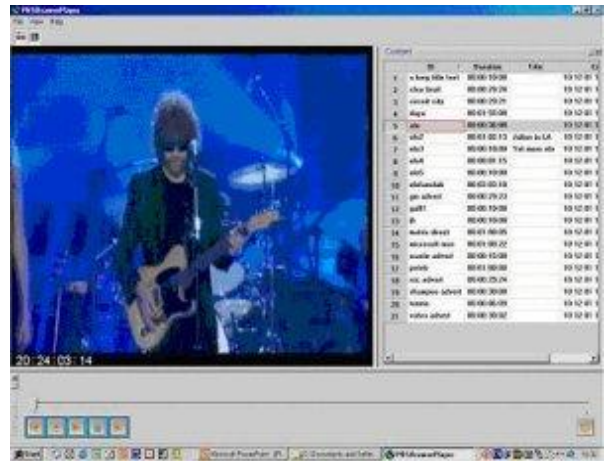
Pebble Beach Systems offers a range of viewing and cuts editing tools to complement its automation products. These have been designed to be format independent and support high resolution MXF or low resolution IPV MPEG1, WM9, MPEG4 and Omneon ProBrowse formats as well as other windows media formats.

Customers can choose to implement a proxy browse network alongside their high resolution system or work entirely within a high resolution infrastructure. Many more users can be supported and historic media more cost effectively retained in a browse proxy environment. However, where the number of concurrent users is relatively small, customers can choose to use a completely high resolution workflow saving the need for multiple databases and expensive encoding technology. Users of Razorfish, Media Porthole and Media Logger can view directly high resolution MXF wrapped clips in near line storage or view browse material.

Two approaches can be adopted for production of the browse resolution material. Where users need to work with low resolution media while its high resolution equivalent is still being recorded, Pebble Beach Systems can offer a system using real time encoders that shadow the broadcast encoders and are controlled at the same time, frame accurately. Browse material is available immediately after the recordings begin and browsing can commence moments after the start of the recording. Alternatively where immediate access to browse media is not a requirement, Pebble Beach Systems is able to offer a high speed transcoding technology that produces MPEG1, WM9 and MPEG4 media directly from high resolution media stored on Omneon and Harris Nexio servers. The transcode operation commences as soon as the high resolution media starts to be written and consequently is accessible within a few minutes after ingest has been completed.

Media Porthole

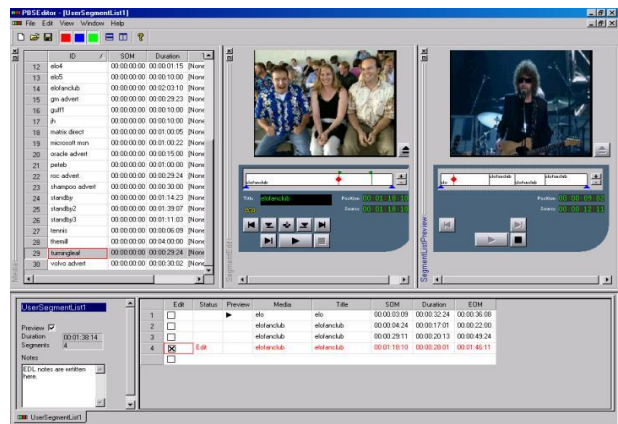
Media Porthole is a frame accurate, simple review tool that provides users with the ability to view material from their desktop PCs. Users can drag and drop IDs from the Pebble Beach Systems database window into the player. A control panel provides simple start and stop functions as well as jog in both directions and slider controls.



Razorfish

Razorfish is a frame accurate cuts-only editor. It has been designed to be fast and easy to use, so that operators can use it with little or no training. This simple but reliable and effective tool is ideal for time-critical applications such as news and sports, where it avoids the use of expensive editors for simple tasks.

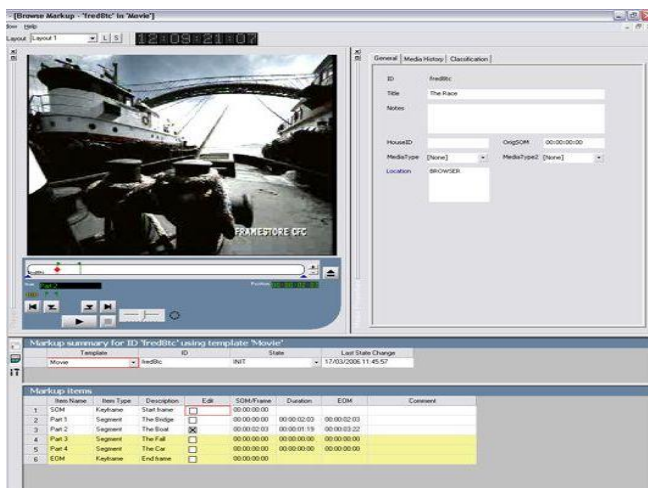
Users can review material directly from their desktop PCs and use a full range of features, such as drag and drop and slider control to find SOMs and EOMs. It has edit and review browser windows and a VTR-like transport control.



Where real time proxy browse encoding is used, editing of browse material can take place immediately after the recordings of high resolution material begins. Once editing is complete, Razorfish exports EDLs (in CMX or other formats) for use by a craft editor for fine-tuning. The EDL can also be loaded directly into some video servers and conformed directly into a new high resolution clip. Where MXF high resolution media is worked on directly then Razorfish edits are immediately available for transfer to playout servers.

Media Logger

Media logger has been integrated into the standard Pebble Beach Systems Client. It enables users to review high or low resolution copies of material and to identify important frames and segments, such as where commercials can be conveniently played.



Tools are provided to create standard templates to simplify workflow and to reduce the incidence of errors. The Media logger automatically saves the important frame and segment information to the database for future use.

Summary of main features

- Frame accurate browse tools from desktop PCs
- Fast, easy and intuitive user interfaces
- Automatically replicates high resolution material in the chosen low resolution format
- Designed to be format independent.
- Support for high res MPEG2 Long GOP & low res IPV MPEG1, WM9, MPEG4, Omneon ProBrowse and other windows media formats

- Users can find material easily using sophisticated database queries
- Search results can be dragged and dropped into the Razorfish, Media Porthole or Media logger browse windows
- Material can be previewed at any time from any desktop
- VTR like transport controls including Play, Stop, FFWD, RWD as well as jog/shuttle in both directions and slider controls.
- Optional external control panel with jog knob
- Browse material is available immediately after the recordings begin and browsing can commence moments after the start of the recording
- Avoids the use of expensive broadcast decoders for material reviewing.
- Razorfish avoids the use of expensive editors for simple tasks
- Simple, fast and intuitive cuts-only editing
- Key frames can be identified.