



Transform your User Experience with Lighthouse – powerful web-based tools for your Marina automation environment



MONITOR all your channels from anywhere, with configurable web-based dashboards. Identify playlist and system errors by exception across single or multiple Marina systems, and view IP streaming outputs from your Dolphin integrated channel devices.

CONTROL your channel playout operations with real-time playlist manipulation, control and media-aware multi-channel monitoring. Configure dedicated buttons and alerts for key functionality to meet your needs.

MANAGE your content across multiple Marina systems, stream video from storage, review clips and segment metadata. Dynamically allocate your ingest ports and automatically resolve ingest scheduling conflicts.

DEPLOY and design your software-defined integrated channels, with template creation for channel design, and ultra-fast channel launch and decommissioning.

KEY BENEFITS

ACCESSIBILITY

Secure real-time access anytime, anywhere: mission-critical control beyond the normal boundaries of the TX environment.

PRODUCTIVITY

Drives operational efficiencies: consolidates control across multiple locations, and focusses fast on what's important.

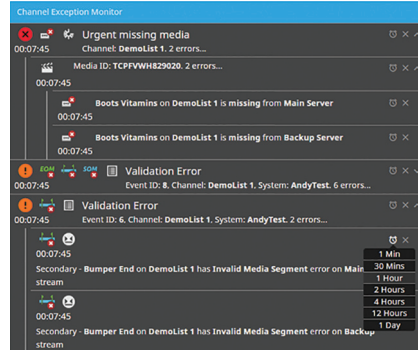
SIMPLICITY

Easy to use, easy to manage: intuitive interfaces for operators, web security and user-based permissions for peace of mind.



FEATURES

Lighthouse functionality is offered through user-configured widgets which are selected from a widget directory and grouped together on dashboards. Any dashboard can be shared between users and groups of users, and can also be displayed as a 'wallboard' which removes unnecessary browser real estate for optimised delivery to a multiviewer.



Channel Exception Monitor

Provides a consolidated view of all playlist errors which are detected across all or selected channels, across multiple Marina systems. Displays event errors in configurable order of priority, with the ability to dismiss or snooze alarms. Examples include: *missing media, timing errors, invalid metadata*

System Exception Monitor

Gives a consolidated view of system errors which are detected across all or selected Marina systems, such as: *node health, host RAM, database health, server capacity, transfer queue size*

Stream Viewer

Displays a configurable selection of IP streaming outputs from Dolphin integrated channel devices under Marina control. These may be geographically separate, and each stream can be labelled by the user for ease of identification.

Automation Stats

Each stat provides a specific event counter or timer, with the ability to look across multiple channels and systems. Examples include: *Missing Media Count, Next Missing, Next Live, Next Live Duration*

Playlist Validation Summary

Delivers an interactive live view of all errors from all channels – or only those channels which have errors – within a single Marina system.

Channel Timeline

Gives a view of one or multiple playout timelines across multiple channels, and spanning multiple systems. Event metadata and validation status is displayed in a dynamic scrolling bar view, which shows primary and secondary events.



Media Inventory

Offers an editable view of the media metadata from all Marina systems connected to Lighthouse. Provides a side by side comparison of metadata from multiple systems.

Playlist Cache Viewer

Delivers a view of DB-cached playlists across multiple systems, highlighting missing media to help users manage advanced media transfers.

Ingest Management

Provides intelligent automatic allocation of Marina ingest resources, with a package of Lighthouse widgets to simplify ingest management. Achieves more ingests with fewer resources by optimising usage, and frees users from complex allocation tasks. Includes a global timeline (with drag and drop edit), conflict viewer (to highlight scheduling issues which cannot be solved automatically) and direct override control for ingests (cue / record / stop).

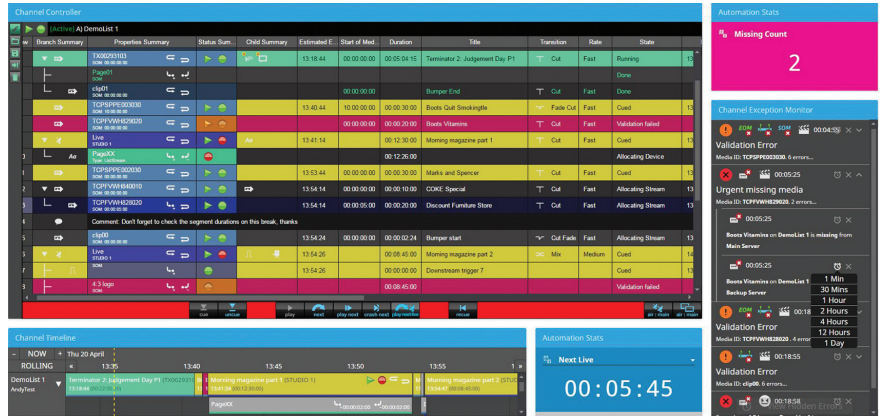


Clip Player

Enables the operator to stream video from storage. Features simple transport controls, allowing the user to review a clip, create segment data, and export an EDL.

Automation Job Viewer

Gives a read-only view of Marina automation jobs, displaying transfers and deletions in a dynamic-update grid with sort and filter controls.



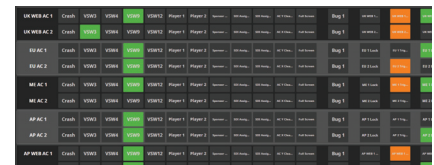
Channel Controller

Offers a grid view of the Marina playlist, with ability for simple editing and manipulation for a specified channel.

When a playlist is being controlled through Lighthouse, an indication is shown in the Marina client playlist UI. Exclusive edit mode privileges in Marina are honored by Lighthouse. Examples of control functions include: *load / append / save a schedule, cue / play / skip events, metadata edit*

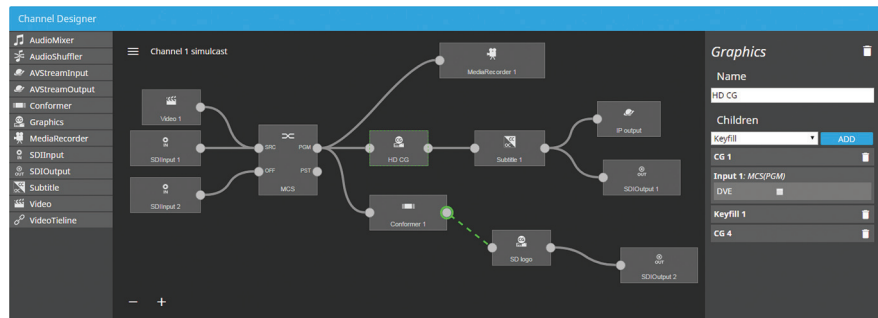
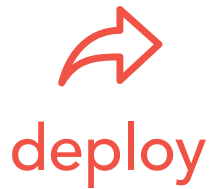
Smart Panel

A customisable control surface to show dedicated buttons and alerts for frequently used features. Enables fast reaction on focussed tasks, e.g. display a station ident, clear a sponsor logo, or lock a live source.



Channel Viewer

Gives the user a monitoring read-only grid view of a Marina playlist, without edit or control privileges. The Lighthouse view is independent from the Marina view, even though they can look simultaneously at the same playlist.

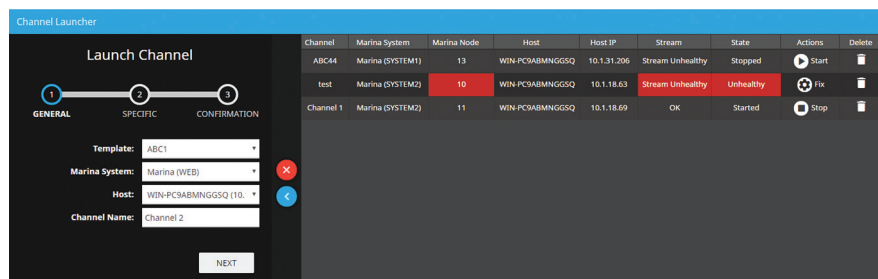


Channel Designer

Offers offline editing of Dolphin and Orca pipelines, and enables the end user to create and edit templates for different types of software-defined channels using drag and drop graphical tools. The Channel Designer is aware of what components are available on your system and will prevent you making invalid selections.

Channel Launcher

Channels are simply and quickly launched by first selecting a channel template. The operator then selects the Marina system to control the channel, chooses the host (Bare Metal or Virtual Machine), and specifies whether to launch the channel immediately or defer the launch to a later time. It also handles removal of channels to free up resources.





SECURITY

Lighthouse delivers secure remote access outside the automation LAN:

- Full HTTPS support with TLS encryption, both Marina to web server and web server to browser.
- Protection against brute-force password and username attacks.
- Secure password hashing.
- All communication between Marina and Lighthouse uses a proprietary API so

that all actions are validated – there is no communication between Lighthouse and the Marina database.

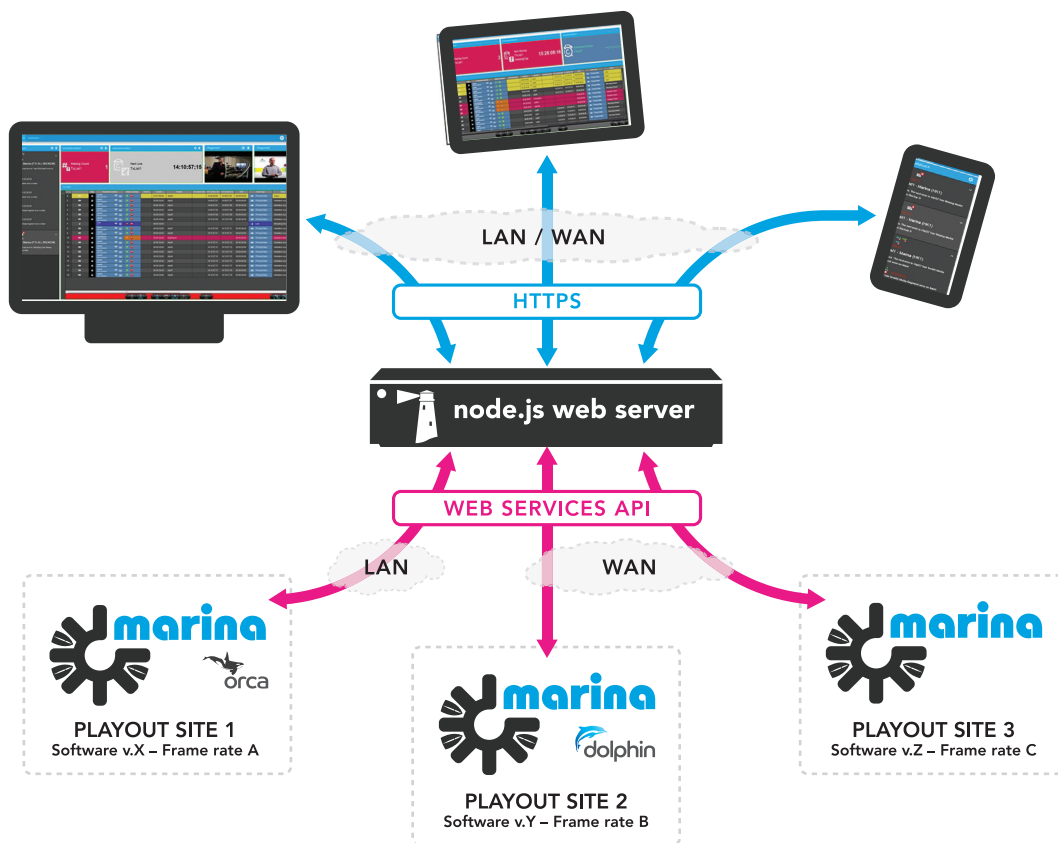
- Marina can be configured to refuse all actions over the Lighthouse API Interface, so that only monitoring is possible.
- Granular administrative permission control for users and groups, including separate view and edit rights for each Widget.



DEPLOYMENT

Lighthouse is deployed as a node.js webserver on a Centos operating system. Using Docker software containers and Rancher container orchestration, n+m redundancy and load balancing is offered in a highly scalable and easy-to-manage architecture.

Pebble can provide host hardware, however many users prefer to deploy COTS server hardware, or implement Lighthouse as part of a virtualised infrastructure.



For more information contact sales@pebble.tv
or visit www.pebble.tv

Pebble Beach Systems has checked the information in this datasheet and believes it to be accurate. However the company accepts no responsibility for errors or omissions. Pebble Beach Systems reserves the right to modify its products and specifications without prior notice. Copyright Pebble Beach Systems Ltd, Weybridge, United Kingdom. All rights reserved. Issue Five, March 2018.

