

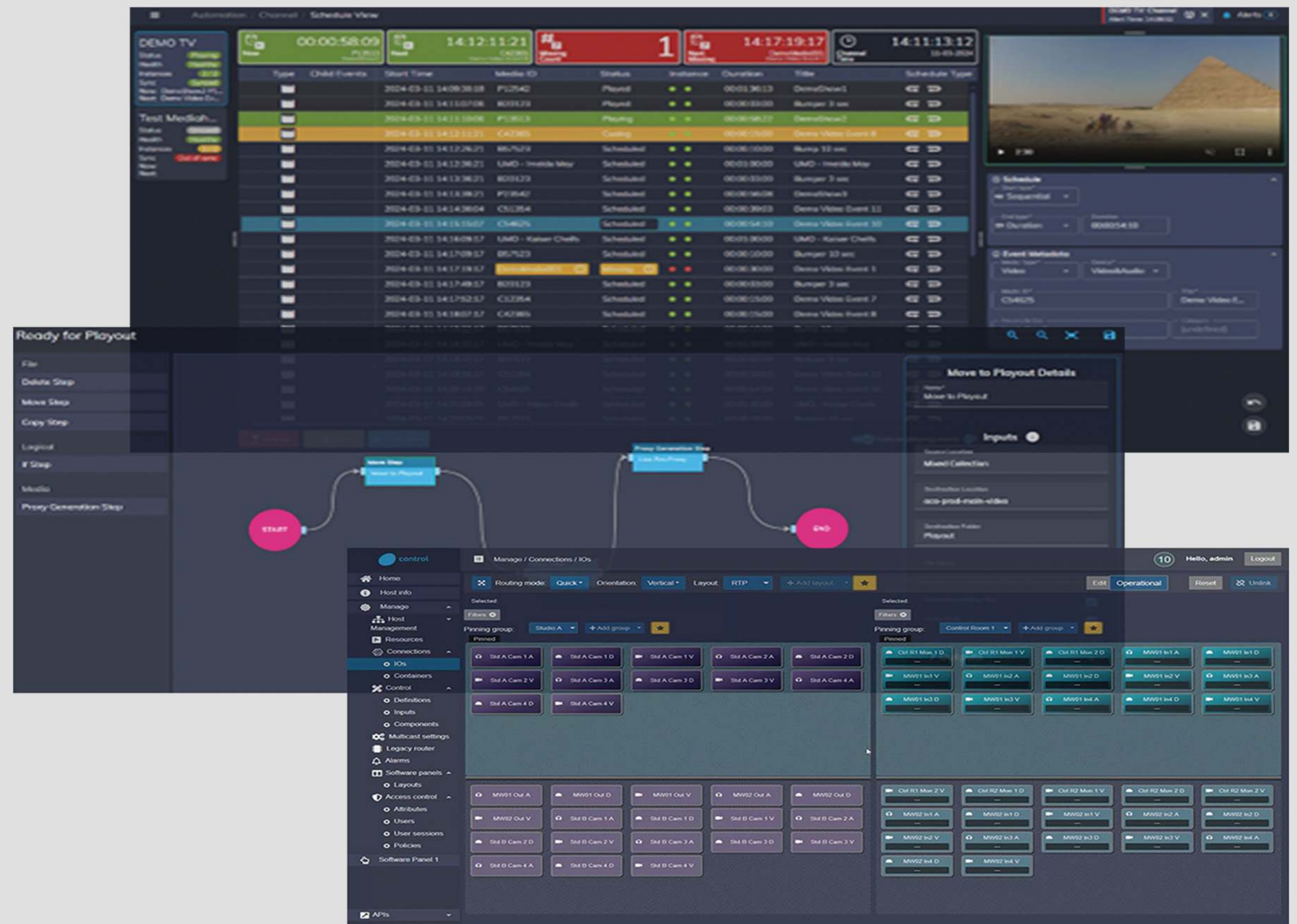
## Platform for Realtime Integrated Media Applications

### Product overview

State-of-the-art software platform that supports a range of applications, addressing the needs of modern media and broadcast organisations.

Architected to meet the most dynamic needs of modern organisations, it offers a comprehensive suite of services emphasising flexibility, strong security and seamless centralised management.

Leveraging sophisticated technology, it sets a new standard in operational efficiency and scalability.



### Comprehensive Platform Benefits



#### Strong Security

Industry-leading security protocols protect your broadcasts, ensuring real-time permissions and compliance with EBU R143 standards



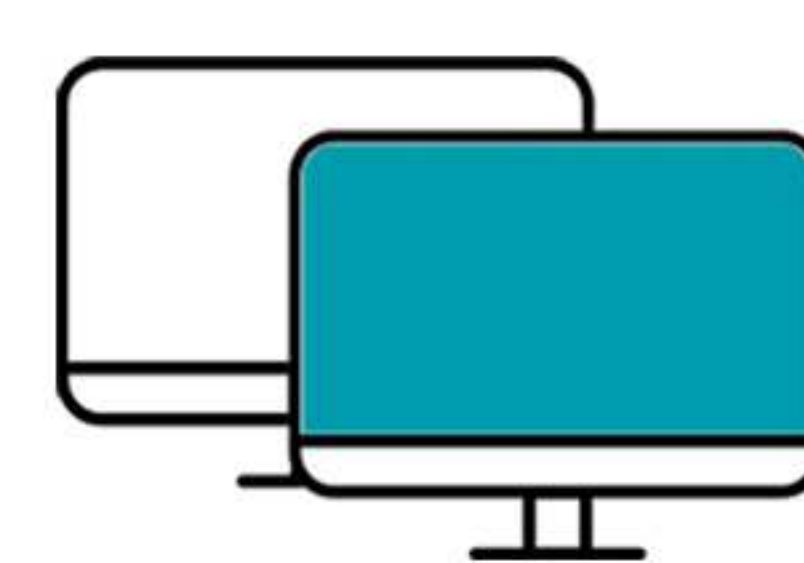
#### Centralised Management

A singular interface to manage all playout and workflows, streamlining operations and enhancing efficiency



#### Scalability & Flexibility

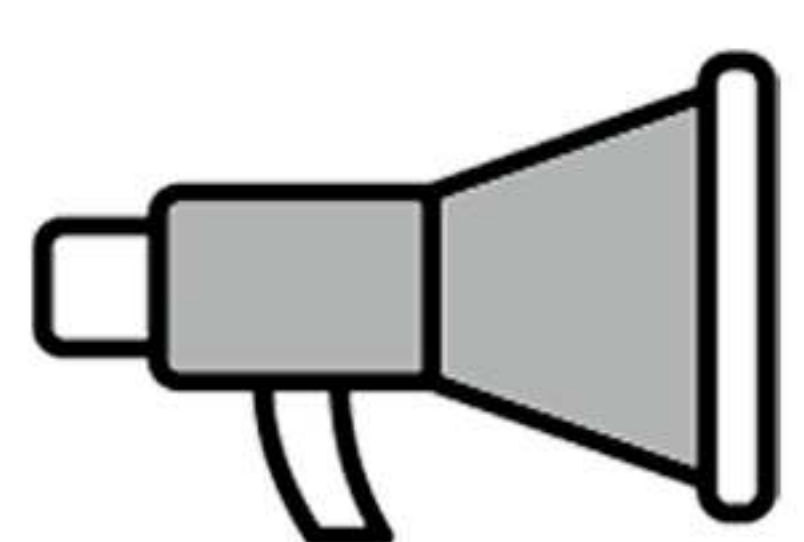
Tailored to support organisational growth, it adapts through on-premises, cloud or hybrid deployments



#### Redundancy & Disaster Recovery

With automatic failover and redundancy, it ensures your operations are continuous and reliable

### Advanced Key Features



#### System Alerting & Centralised Monitoring

Proactive monitoring and alerts keep you ahead of system issues



#### Licensing & Permissions

Advanced access control through detailed permissions management



#### Managed Deployment

Simplified service deployments with flexible and controlled deployment options



## PRIMA Tech Specifications & Expanded Features



### Tech Specifications

#### Kubernetes Environments Support

- Amazon EKS
- Google Cloud GKE
- RedHat Openshift
- Native PRIMA managed



### Expanded Features

#### Strong Security

- Implements Single Sign-On (SSO) with SAML2
- Ensures secure connections with HTTPS TLS 1.3 and mutual TLS

#### API Integration

- Utilises OpenAPI (OAS) for secure REST-based API integration
- Authentication via OAuth 2.0 JWT Tokens

## Playout

Designed to streamline the process of channel deployment and management for broadcasters

- **Channel Deployment**  
Fast, wizard-driven setup
- **1+1 Redundancy**  
Network SMB and S3 Storage playback
- **Playlist Synchronisation**  
Pebble Automation integration
- **Low Latency Monitor**  
WebRTC for live channel viewing
- **Playlist Stats**  
Quick stats and counters
- **Graphic Capabilities**  
PNG and HTML5 (Adobe Animate Template and Live Third Party)
- **Subtitle Playback**  
SRT file format support
- **Audio Shuffle Control**  
Track rearrangement and muting
- **Realtime Loudness**  
Real-time audio adjustment

## Workflow

Seamlessly connects networked and cloud storage, enabling easy creation and deployment of custom data workflows with an intuitive builder

- **Flexible Workflows**  
Custom workflows - easy to create, test, and deploy  
User-friendly "drag and drop" builder for any complexity or step count
- **Media Library**  
Supporting Media Essences and Instances creation  
Enabling viewing of files and technical metadata  
Compatible with SMB and S3 storage
- **Content Prep & Metadata Markup**  
Enabling soft metadata segmentation  
Generating proxy files  
Allowing browsing and markup via Proxy Player

## Control

Optimises IP connectivity, providing a vital control system for seamless device management and signal routing in broadcast environments

- Permitting quick connections through favorites and compatibility checks
- Supporting precise hardware and software control customisation
- Offering advanced user rights management for customised authorisation